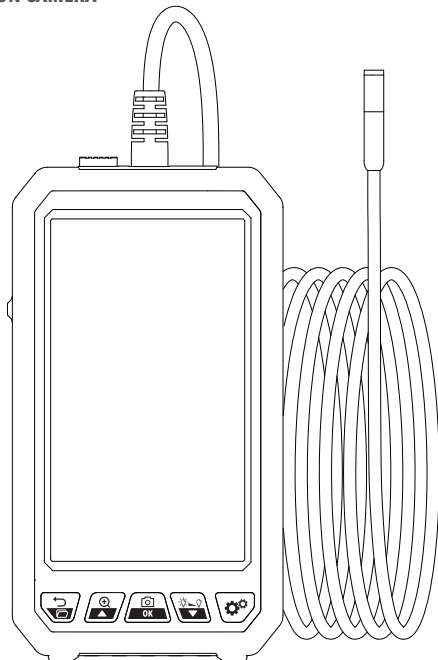


USER MANUAL

IC6550 INSPECTION CAMERA



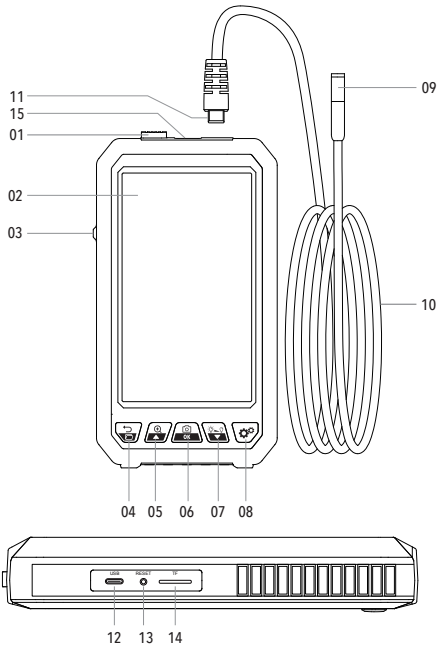
EN ENGLISH

Manual in your
language?

Check the back cover

FUTECH
MAKE IT
EASY

OVERVIEW



■ DEVICE

- 01 Camera lock
- 02 Display
- 03 Power On / Off
- 04 Back / Album
- 05 Up / Zoom
- 06 Camera shutter / Enter button
- 07 Down / Brightness LED lights
- 08 Settings
- 09 Lens + LED Lights
- 10 Gooseneck
- 11 USB-C connector
- 12 USB-C socket (for charging)
- 13 Reset button
- 14 Memory card slot
- 15 USB-C socket (for camera)

SAFETY

Please read the safety instructions provided as separate booklet with the device.

This product is an inspection camera for industrial and building applications. It is not intended for medical use or human examination.

Do not hit the camera violently and do not pull the camera or gooseneck.

When used in an environment with sharp bumps, please use it carefully to prevent the waterproof protective layer of the camera or gooseneck from being scratched.

This inspection camera is not heat-resistant. When checking the interior of an engine or machine, please make sure that the temperature inside the engine or machine is within the operating temperature (see SPECIFICATIONS).

When not in use, please ensure that the lens and the main unit are clean and dry.

Avoid contact with corrosive and dangerous substances, like oil, gasoline, acids, etc.

FIRST TIME USAGE

- Remove all protective foils.
- Read the manual. You can download this user manual in many languages by using the QR codes at the end of this document.

BATTERY

This device works with a Lithium-Ion battery. Make sure the provided battery is fully charged.

To charge the battery, you can only use a 5V - 1A or 5V - 2A charger with USB Type C connector for charging. Connect your charger to the USB-C Socket for charging [12].

USE

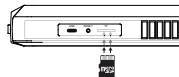
■ PREPARE THE DEVICE

— (DIS-)CONNECTING THE CAMERA (GOOSENECK)

- Slide an hold the camera lock [01] away from the USB-C socket (for camera) [15] while insert the USB-C connector [11] of the camera in the USB-C socket (for camera) [15] of the device.
- To disconnect the camera, slide an hold the camera lock [01] away from the USB-C socket (for camera) [15] while pull the USB-C connector [11] of the camera out of the USB-C socket (for camera) [15] of the device.

— MICRO SD CARD

- Insert a Micro SD card (maximum 64GB) in the memory card slot [14]. Pay attention you insert the card in the correct direction. Do not use excessive force when inserting or removing a memory card to prevent damage to the card or device.



■ STANDARD USING

- Switch on the device by shifting up the power On / Off button [03] and check the display [02] lights up.
- Slide the gooseneck [10] with camera [09] inside a tube, engine, machine, style wall... Move the gooseneck [10] with camera [09] until you see the object or place you want to inspect on the display [02].
- When your inspection is finished, remove the gooseneck [10] with camera [09] entirely from the tube, engine, machine, style wall...
- Switch off the device by shifting down the power On / Off button [03].

■ LANGUAGE SETTING

- Press the settings button [08] to enter the menu with all available settings.
- Select the language setting
- Press the up [05] and down [07] button to select the desired language.
- Press the Enter [06] button to confirm your choice. The language will change now.

■ OTHER SETTINGS

- Click the Settings button [08] to enter the menu with settings.
- Use the Up [05] and Down [07] buttons to move the gray cursor and select the desired menu item.
- Click the Enter button [06] to open the item, use the Up [05] and Down [07] buttons to select your preferred parameter.
- Then click the Enter button [06] to confirm.
- Use the Back [04] button to leave the actual part of the menu you are working in.
- After the setting is completed, click the Back button [04] to exit the menu with settings.

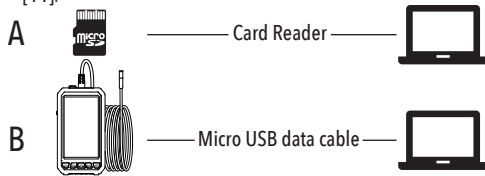
■ IMPROVE AND USE THE IMAGE

- Enlarge the subject on the image, use the zoom button [05] to gradually increase from 1x > 1.5x > 2x > 1x > 1.5x...
- Press the Camera shutter [06] short to make a photograph.
- Hold the Camera shutter [06] to make a video. The video stops when you stop holding the Camera shutter button [06].
- You can decrease the brightness of the LED lights [09] by pressing Brightness LED lights button [07]. The output of LED lights [09] will gradually drop from 100% > 80% > 60% > 0%.



■ PHOTO AND VIDEO ALBUM

- Press the Album button [04] to open the library with all images and videos you saved.
- Select the photo or video you want to watch by using the Up [05] and Down [07] button.
- Then click the Enter button [06] to open the selected photo or video.
- If you want to delete this photo or video, press the Settings button [08].
- Press the Back button to return to the previous view.
- You can copy photos or videos to your computer in 2 ways. You can take the Memory Card and slide it in your computer. Or you can connect your computer with a USB Type C connector [11].



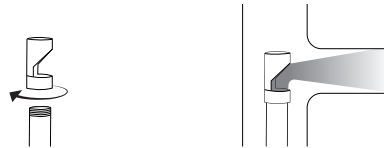
■ ACCESSORIES

This device includes following standard accessories. They can be used Please follow the mounting instructions below in case you want to use one of the accessories.



Rotating fixation Protective ring Magnet Hook

Mirror:
Dual lens no need side mirror, single lens is equipped with side mirror



Rotating fixation Reflect the side through the mirror observing objects in a wider range

■ FAQ

What should you do when the image on the display is delayed or when the device is blocked?

Please check whether the product has sufficient power or restart the device.

What should you do when the image is not sharp?

The optimal distance between the camera and the subject is between 2cm-10cm. Please change the distance to the subject or clean the lens of the camera with a clean alcohol cloth.

What should you do when the camera is hot?

It is normal for the camera to heat up, especially when the LED lights [13] are used with the highest brightness. This does not affect normal use or service life.

What should you do when the memory card cannot be recognized?

Please check the memory card is a TF Card using the FAT32 format. If not, please format the memory card. Remove and insert the card again, the restart your device.

STORAGE AND MAINTENANCE

Do not use this tool in direct sunlight or expose it to temperatures outside the allowed operating temperature (see SPECIFICATIONS).

Do not store the tool in direct sunlight or expose it to temperatures outside the allowed storage temperature (see SPECIFICATIONS).

Use a soft, dry cloth to remove moisture from the tool before storage.

In case of long-term storage (without usage), we recommend to fully charge the battery every 3 months.

Exterior plastic parts may be cleaned with a damp cloth. Although these parts are solvent resistant, never use solvents.

Do not dispose this product with household waste.



TECHNICAL SPECIFICATIONS

MODEL	IC6550
Lenght goodsneck	5m
Camera diameter	8mm
Camera & Photo resolution	1920 x 1080
Video resolution	1280 x 720
Photo format	JPG
Video format	AVI
Viewing angle	70°
Focusing range	20-100mm
Auxiliary lighting	8 adjustable LEDs
Screen type	5-inch color LEDs
Memory card	Micro SD Card - FAT32 - maximum 64GB
Charge port	Type-C
Battery	2000mAh
Battery charging time	2,5 hours
Operating temperature	-25°C - +45°C
Camera temperature	-25°C - +80°C



DECLARATION OF CONFORMITY

Futech (Belgium) declares under its own responsibility that this device:

- IC6550 INSPECTION CAMERA

is in conformity with the standards

- EN 61000-6-4: 2019

- EN 61000-6-2: 2019

Under EMC Directive

2014/30/EU

Lier, Belgium,
March 30, 2023
Patrick Wauters

Potential misprints are reserved. Images used are not strict. All features, functionality and other product specifications are subject to change without notice or obligation.

USER MANUAL

other languages:



DA DANSK



DE DEUTSCH



ES ESPAÑOL



ET EESTI KEEL



FI SUOMEN KIELI



FR FRANÇAIS



IS ÍSLENSKA



IT ITALIANO



NL NEDERLANDS



NO NORSK



PT PORTUGUÊS



SL SLOVENŠČINA



SV SVENSKA



-  Facebook
@futechtools
-  LinkedIn
futechtools
-  World Wide Web
futech-easy.com
-  YouTube
@futechtools